



ALUMINIUM PROFILE POLISHING MACHINE 7510 EH2



TECHNICAL DETAILS

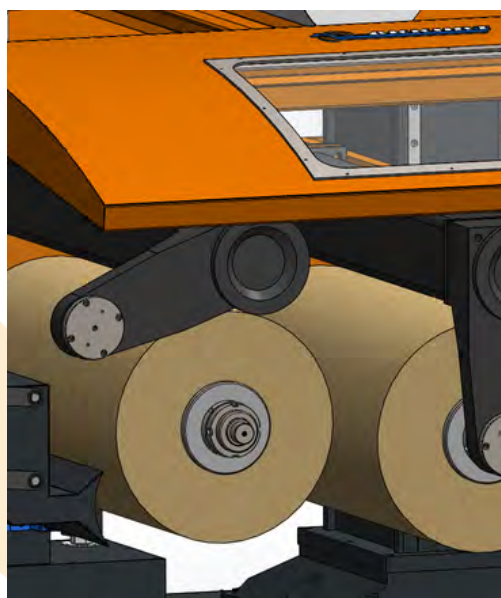
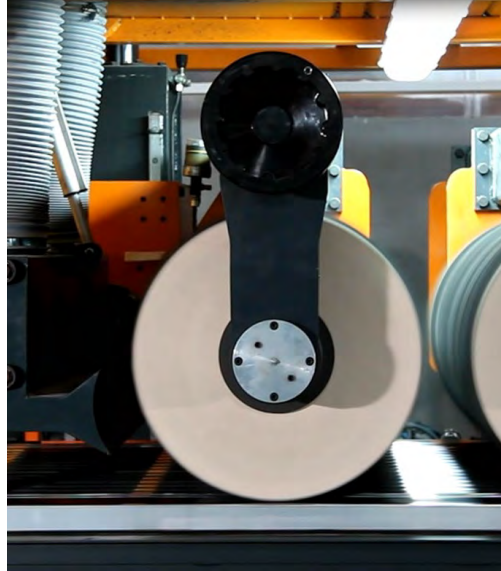
7510 EH2

BRUSHES

Two group of polishing brushes, each 1.000 mm length and driven 37 Kw Electrical Motor. You can use brush diameter up to 500 mm. You can set all brushes on the 80 mm diameter brush spindle in the workshop. Set up in to machine is very easy and fast because of counter sliding bed. Brush rotating speed can be adjusted from 0 up to 2000 with equipment inverter system.

Each brush group precisely moving on separate vertically located 8 linear bearing through hydraulic cylinders. Brush groups have separate hydraulic cylinder system for fast upward and downward movement on the Aluminium. Due to this system, operator do not make any adjustment for each start and also this system eliminate time losing and saving time.

This system also giving extraordinary working possibility for thin extrusion profile which eliminate brush contact to the working table. The hydraulic system power unit is total 1,5 Kw (2 Hp)

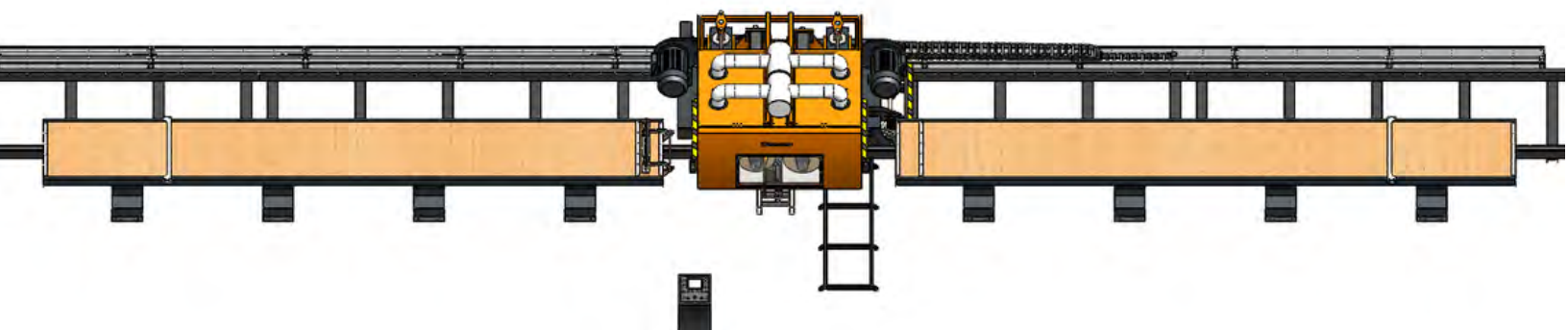


HEAD SYSTEM

This machine has fixed table and movable polishing head.

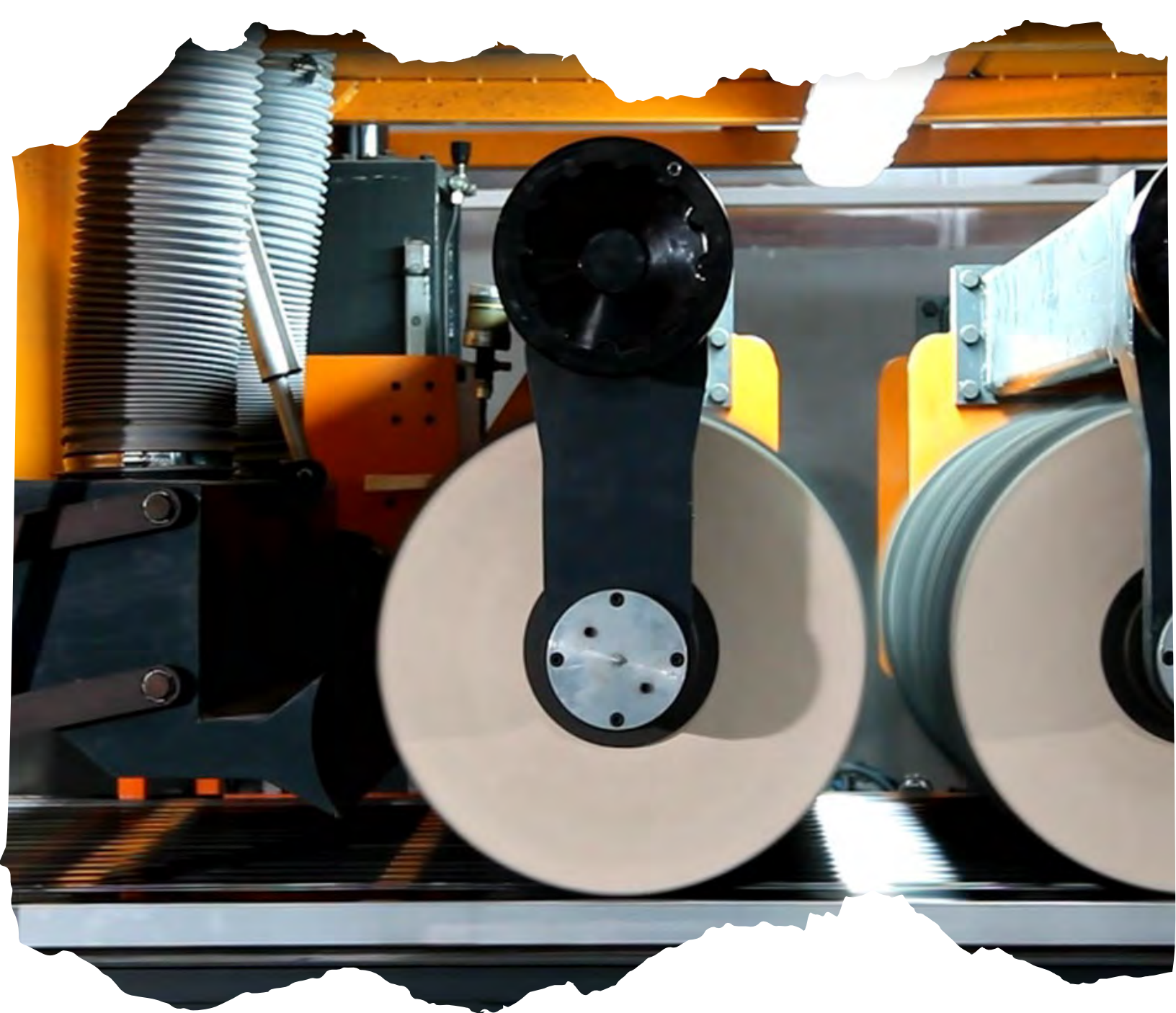
Polishing head moving on special construction 24 meters length rail system which fixed on the floor.

Polishing head movement on the rail powered by 3 Kw Servo motor with gear box. Movement speed can be adjust up to 18 meter/minute



FIXED TABLES

The machine has 2 fixed table, Table dimensions: 8.000 x 1.100 mm.



CABINET

The machine has special cabinet which fixed to Movable head and cover, machine, polishing brushes and relative air duct adapter. There is a functional door on the cabin which cover transparent polycarbonate window allows to check polishing operation. The air duct adapter's height (between brush and extrusion profile) is adjustable.



BRUSH CORRECTION

Brush groups works against vibration through vertically on horizontally assembled pressure axe column. During operation if brushes have a balance and surface problems the machine have balancing and brush surface correction system. You can use this system on the table when needed. This system is moving on the linear bearing by pneumatic cylinder.

OPTIONAL

7510 EH 2



BRUSH ASSEMBLY PRES

This press assembles brushes into the brush sleeves easily. 2.2 Kw (3 Hp)
Electrical motors and 9.000 Kg press capacity.

BRUSH SLEEVES

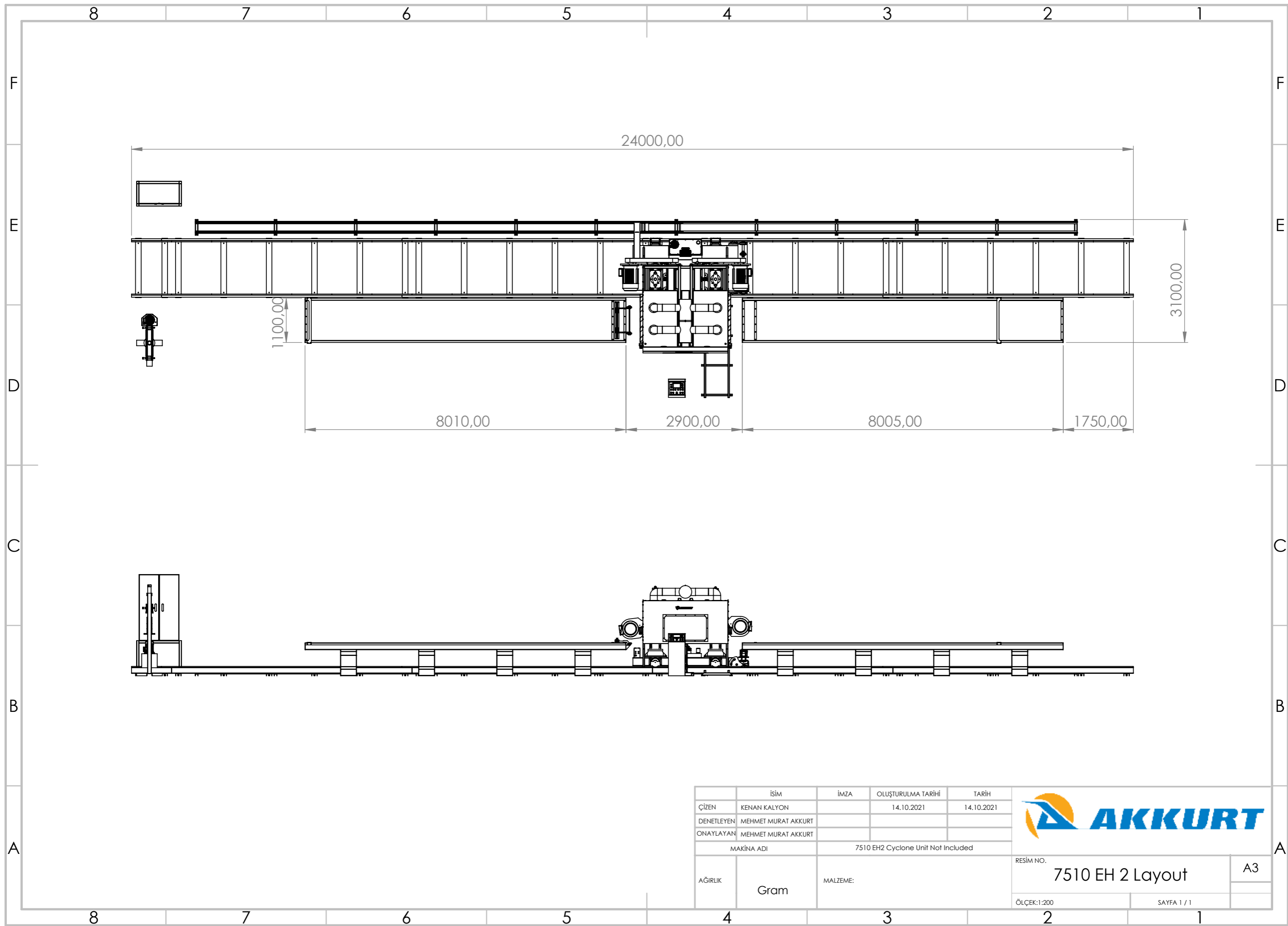
If you want to speed up replacing brush groups we recommend this unit. This also useful when you to use different type brushes.

OSCILLATION

It is possible to make up to 25 mm oscillation for brush groups through electric motor. This option can not be recommended for round extrusion profile, tube serially producer. Because of this is not standard item.

SPRAYING

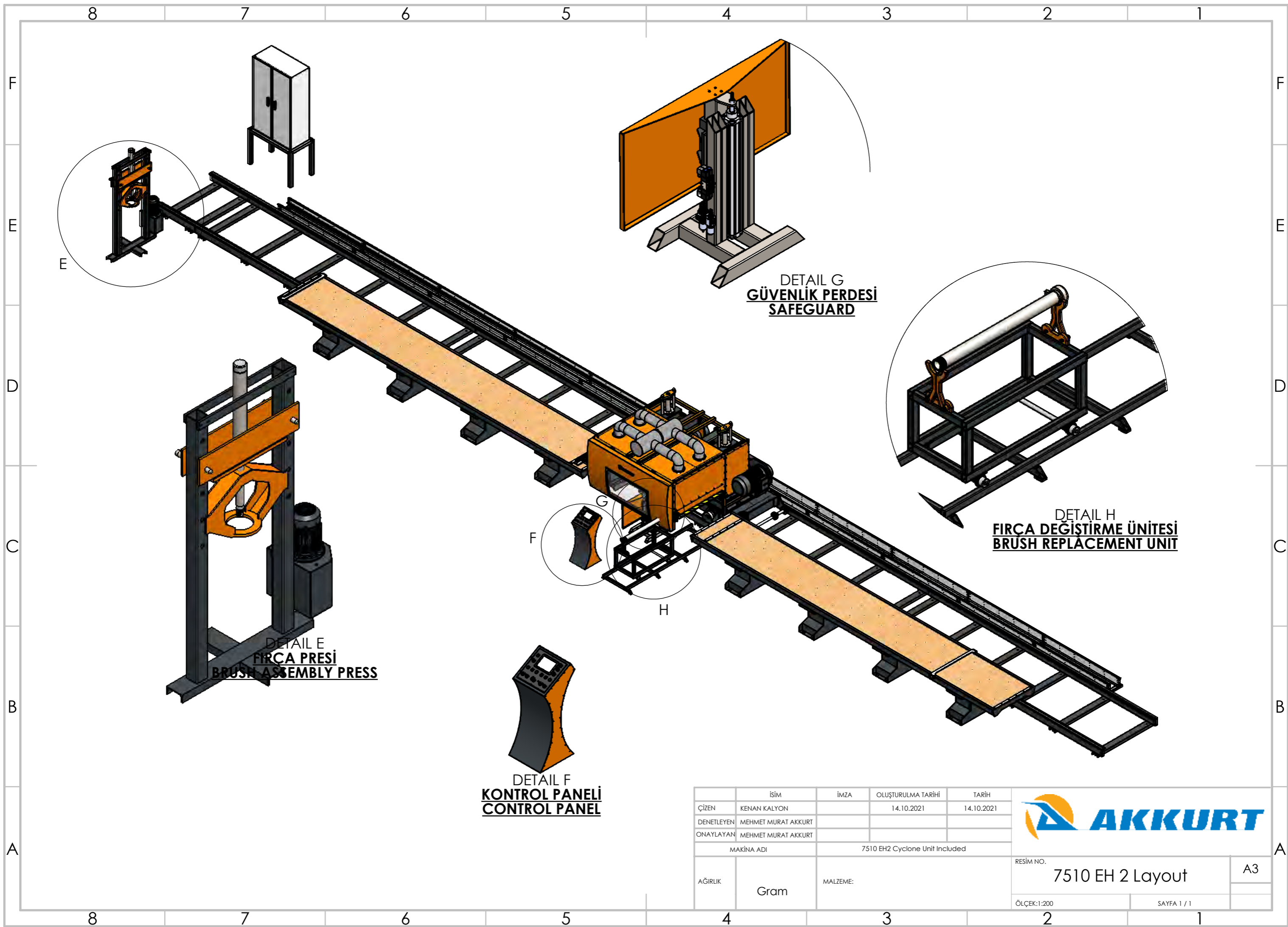
Polishing compound spraying system consist total 6 pcs (3 for each group) high pressure gun, 100 litres capacity polishing compound tank and special compound feeding pump 3,5 -4 bars. This system spraying liquid polishing compound on the Extrusion profile directly. Some companies likes and using this system some companies not using. For this reason instead of recommendation we leave under customer decision.



	İSİM	İMZA	OLUŞTURULMA TARİHİ	TARİH
ÇİZEN	KENAN KALYON		14.10.2021	14.10.2021
DENETLEYEN	MEHMET MURAT AKKURT			
ONAYLAYAN	MEHMET MURAT AKKURT			
MAKİNA ADI		7510 EH2 Cyclone Unit Not Included		
AĞIRLIK	Gram	MALZEME:		



RESİM NO.	7510 EH 2 Layout	A3
ÖLÇEK: 1:200	SAYFA 1 / 1	



DETAIL E
FIRÇA PRESİ
BRUSH ASSEMBLY PRESS

DETAIL F
KONTROL PANELİ
CONTROL PANEL

DETAIL G
GÜVENLİK PERDESİ
SAFEGUARD

DETAIL H
FIRÇA DEĞİŞTİRME ÜNİTESİ
BRUSH REPLACEMENT UNIT

	İSİM	İMZA	OLUŞTURULMA TARİHİ	TARİH
ÇİZEN	KENAN KALYON		14.10.2021	14.10.2021
DENETLEYEN	MEHMET MURAT AKKURT			
ONAYLAYAN	MEHMET MURAT AKKURT			
MAKİNA ADI	7510 EH2 Cyclone Unit Included			
AĞIRLIK	Gram	MALZEME:		



RESİM NO.	7510 EH 2 Layout	A3
ÖLÇEK: 1:200	SAYFA 1 / 1	